

EX.2015.NW.147



ARTIST All Japan Students' Photographers' Association  
 TITLE *No Country on the Earth for Us*  
 DATE 1970  
 MEDIUM Artist's book  
 DIMENSIONS Overall: 8 3/8 x 5 7/8 x 3/8 in. (21.3 x 14.9 x 1 cm)  
 CREDIT LINE The Museum of Fine Arts, Houston, The Manfred Heiting Book Collection, museum purchase funded by the Caroline Wiess Law Accessions Endowment Fund

EX.2015.NW.10.1



ARTIST Dodo Shunji, Japanese, born 1947  
 TITLE *Inside the Barricades at Kyushu University, School of Liberal Arts, Oct. 27, 1969, Fukuoka*  
 DATE 1969  
 MEDIUM Gelatin silver print  
 DIMENSIONS Overall: 10 x 14 in. (25.4 x 35.6 cm)  
 Frame (outer) (ANW EXHIBITION FRAME): 20 5/8 x 16 5/8 x 1 3/4 in. (52.4 x 42.2 x 4.4 cm)  
 CREDIT LINE Dodo Shunji

EX.2015.NW.10.2



ARTIST Dodo Shunji, Japanese, born 1947  
 TITLE *Inside the Barricades at Kyushu University, School of Liberal Arts, Oct. 27, 1969, Fukuoka*  
 DATE 1969  
 MEDIUM Gelatin silver print  
 DIMENSIONS Overall: 10 x 14 in. (25.4 x 35.6 cm)  
 Frame (outer): 20 5/8 x 16 5/8 x 1 3/4 in. (52.4 x 42.2 x 4.4 cm)  
 CREDIT LINE Dodo Shunji

EX.2015.NW.10.3



ARTIST Dodo Shunji, Japanese, born 1947  
 TITLE *Inside the Barricades at Kyushu University, School of Liberal Arts, Oct. 27, 1969, Fukuoka*  
 DATE 1969  
 MEDIUM Gelatin silver print  
 DIMENSIONS Overall: 10 x 14 in. (25.4 x 35.6 cm)  
 Frame (outer): 16 5/8 x 20 5/8 x 1 3/4 in. (42.2 x 52.4 x 4.4 cm)  
 CREDIT LINE Dodo Shunji

EX.2015.NW.10.5



ARTIST Dodo Shunji, Japanese, born 1947  
 TITLE *Inside the Barricades at Kyushu University, School of Liberal Arts, Oct. 27, 1969, Fukuoka*  
 DATE 1969  
 MEDIUM Gelatin silver print  
 DIMENSIONS Sheet: 16 x 13 1/4 in. (40.6 x 33.7 cm)  
 Image: 12 x 9 3/4 in. (30.5 x 24.8 cm)  
 Frame (outer): 20 5/8 x 16 5/8 x 1 3/4 in. (52.4 x 42.2 x 4.4 cm)  
 CREDIT LINE Dodo Shunji

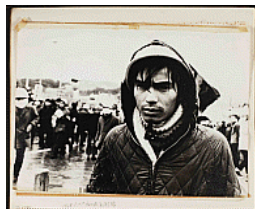
**For a New World to Come: Experiments in Japanese Art  
and Photography, 1968-1979**

EX.2015.NW.10.7



ARTIST Dodo Shunji, Japanese, born 1947  
 TITLE *Inside the Barricades at Kyushu University, School of Liberal Arts, Oct. 27, 1969, Fukuoka*  
 DATE 1969  
 MEDIUM Gelatin silver print  
 DIMENSIONS Sheet: 16 x 13 1/4 in. (40.6 x 33.7 cm)  
 Image: 9 1/4 x 11 15/16 in. (23.5 x 30.3 cm)  
 Frame (outer): 20 5/8 x 16 5/8 x 1 3/4 in. (52.4 x 42.2 x 4.4 cm)  
 CREDIT LINE Dodo Shunji

EX.2015.NW.55.8



ARTIST Dodo Shunji, Japanese, born 1947  
 TITLE *Album (photographs shot in Sasebo and other locations)*  
 DATE 1968-1969  
 MEDIUM Gelatin silver print mounted on paper  
 DIMENSIONS Sheet: 17 13/16 x 14 9/16 in. (45.2 x 37 cm)  
 Image (RECTO): 11 15/16 x 16 15/16 in. (30.3 x 43 cm)  
 Image (VERSO): 9 5/16 x 11 7/16 in. (23.7 x 29 cm)  
 Frame (outer): 20 5/8 x 24 5/8 x 1 3/4 in. (52.4 x 62.5 x 4.4 cm)  
 CREDIT LINE Shunji Dodo

EX.2015.NW.152



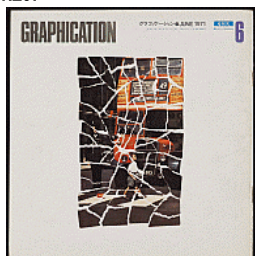
ARTIST Enari Tsuneo, Japanese  
 TITLE *Mainichi gurafu/The Mainichi Graphic, Special Issue: University in Explosion, '68-'69 Students Power*  
 DATE 1969  
 MEDIUM Artist's book  
 DIMENSIONS Overall: 11 1/8 x 8 3/8 x 1/8 in. (28.3 x 21.3 x 0.3 cm)  
 CREDIT LINE The Museum of Fine Arts, Houston, The Manfred Heiting Book Collection, museum purchase funded by the Caroline Wiess Law Accessions Endowment Fund

EX.2015.NW.205



ARTIST Fuji Xerox, Co., Ltd.  
 TITLE *Graphication No. 5*  
 DATE May 1970  
 MEDIUM Artist's book  
 DIMENSIONS Overall: 9 5/8 x 9 5/8 x 1/8 in. (24.5 x 24.5 x 0.3 cm)  
 CREDIT LINE Courtesy of Yokota Shigeru Gallery

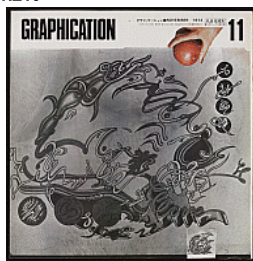
EX.2015.NW.207



ARTIST Fuji Xerox, Co., Ltd.  
 TITLE *Graphication No. 6*  
 DATE June 1971  
 MEDIUM Magazine  
 DIMENSIONS Overall: 9 5/8 x 9 5/8 x 1/8 in. (24.5 x 24.5 x 0.3 cm)  
 CREDIT LINE Courtesy of the Hirsch Library, the Museum of Fine Arts, Houston

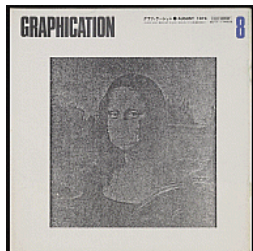
For a New World to Come: Experiments in Japanese Art  
and Photography, 1968-1979

EX.2015.NW.210



ARTIST Fuji Xerox, Co., Ltd.  
TITLE *Graphication No. 11*  
DATE November 1973  
MEDIUM Magazine  
DIMENSIONS Overall: 9 5/8 x 9 5/8 x 1/8 in. (24.5 x 24.5 x 0.3 cm)  
CREDIT LINE Courtesy of the Hirsch Library, the Museum of Fine Arts, Houston

EX.2015.NW.211



ARTIST Fuji Xerox, Co., Ltd.  
TITLE *Graphication No. 8*  
DATE August 1974  
MEDIUM magazine  
DIMENSIONS Overall: 9 5/8 x 9 5/8 x 1/8 in. (24.5 x 24.5 x 0.3 cm)  
CREDIT LINE Courtesy of the Hirsch Library, the Museum of Fine Arts, Houston

EX.2015.NW.140



ARTIST Shinzo Hanabusa, Japanese  
Tatsuo Mitoji, Japanese  
TITLE *Testimonies from the Countryside*  
DATE 1971  
MEDIUM Artist's book  
DIMENSIONS Overall: 10 1/4 x 7 1/4 x 1/8 in. (26 x 18.4 x 0.3 cm)  
CREDIT LINE The Museum of Fine Arts, Houston, The Manfred Heiting Book Collection, museum purchase funded by the Caroline Wiess Law Accessions Endowment Fund

EX.2015.NW.182



ARTIST Hosoe Eikoh, Japanese, born 1933  
TITLE *Workshop, no. 4*  
DATE 1974  
MEDIUM Artist's book  
DIMENSIONS Overall: 17 1/4 x 11 1/8 x 1/8 in. (43.8 x 28.3 x 0.3 cm)  
CREDIT LINE The Museum of Fine Arts, Houston, The Manfred Heiting Book Collection, museum purchase funded by the Caroline Wiess Law Accessions Endowment Fund

EX.2015.NW.32.1



ARTIST Kimura Tsunehisa, Japanese, 1928–2008  
TITLE *Art Radical Tower*  
DATE 1971  
MEDIUM photographic collage with applied colors  
DIMENSIONS Overall: 12 x 20 in. (30.5 x 50.8 cm)  
Image: 10 5/8 x 16 in. (27 x 40.6 cm)  
Frame (outer) (APPROX): 16 x 20 in. (40.6 x 50.8 cm)  
CREDIT LINE Tokyo Metropolitan Museum of Photography

**For a New World to Come: Experiments in Japanese Art  
and Photography, 1968-1979**

EX.2015.NW.32.4



ARTIST Kimura Tsunehisa, Japanese, 1928–2008  
 TITLE *Bed In*  
 DATE 1970  
 MEDIUM photographic collage with applied colors  
 DIMENSIONS Image: 10 3/8 x 7 1/2 in. (26.4 x 19 cm)  
 Frame (outer) (APPROX): 24 x 20 in. (61 x 50.8 cm)  
 CREDIT LINE Tokyo Metropolitan Museum of Photography

EX.2015.NW.32.5



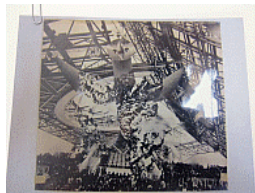
ARTIST Kimura Tsunehisa, Japanese, 1928–2008  
 TITLE *A Refreshing Morning Dawns on a City*  
 DATE 1978  
 MEDIUM photographic collage with applied colors  
 DIMENSIONS Image: 16 3/8 x 8 1/4 in. (41.6 x 21 cm)  
 Frame (outer) (APPROX): 20 x 16 in. (50.8 x 40.6 cm)  
 CREDIT LINE Tokyo Metropolitan Museum of Photography

EX.2015.NW.32.6



ARTIST Kimura Tsunehisa, Japanese, 1928–2008  
 TITLE *Glacier Discharge (Cold Era)*  
 DATE 1979  
 MEDIUM photographic collage with applied colors  
 DIMENSIONS Image: 15 1/4 x 21 1/4 in. (38.7 x 54 cm)  
 Frame (outer): 20 x 24 in. (50.8 x 61 cm)  
 CREDIT LINE Tokyo Metropolitan Museum of Photography

EX.2015.NW.32.7



ARTIST Kimura Tsunehisa, Japanese, 1928–2008  
 TITLE *Hero's Scolding*  
 DATE 1970  
 MEDIUM photographic collage with applied colors  
 DIMENSIONS Frame (outer) (APPROX.): 16 x 20 in. (40.6 x 50.8 cm)  
 Image: 12 x 13 1/8 in. (30.5 x 33.3 cm)  
 CREDIT LINE Tokyo Metropolitan Museum of Photography

EX.2015.NW.32.8



ARTIST Kimura Tsunehisa, Japanese, 1928–2008  
 TITLE *Japanese Cultural Revolution  
Faith in the Unknown*  
 DATE 1973  
 MEDIUM photographic collage with applied colors  
 DIMENSIONS Frame (outer): 16 x 20 in. (40.6 x 50.8 cm)  
 Image: 10 3/8 x 7 1/4 in. (26.4 x 18.4 cm)  
 CREDIT LINE Tokyo Metropolitan Museum of Photography

**For a New World to Come: Experiments in Japanese Art  
and Photography, 1968-1979**

EX.2015.NW.32.10



ARTIST Kimura Tsunehisa, Japanese, 1928–2008  
 TITLE *Ninja Nixon*  
 DATE 1976  
 MEDIUM photographic collage with applied colors  
 DIMENSIONS Frame (outer) (APPROX.): 20 x 16 in. (50.8 x 40.6 cm)  
 Image: 11 3/8 x 8 1/2 in. (28.9 x 21.6 cm)  
 CREDIT LINE Tokyo Metropolitan Museum of Photography

2013.254



ARTIST Kitai Kazuo, Japanese, born 1944  
 TITLE *Students at Meeting  
from Barricade*  
 DATE 1968  
 MEDIUM Gelatin silver print  
 DIMENSIONS Image: 14 7/8 x 10 in. (37.8 x 25.4 cm)  
 Sheet: 16 3/4 x 12 in. (42.5 x 30.5 cm)  
 Frame (ANW EXHIBITION FRAME): 24 5/8 x 18 5/8 x 1 15/16 in. (62.5 x 47.3 x 4.9 cm)  
 CREDIT LINE Museum purchase funded by the Mary Kathryn Lynch Charitable Lead Trust Fund

2013.255



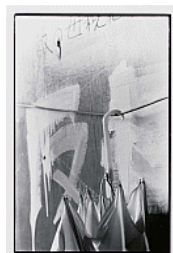
ARTIST Kitai Kazuo, Japanese, born 1944  
 TITLE *Police Force Rush  
from Barricade*  
 DATE 1968  
 MEDIUM Gelatin silver print, edition 2/5, printed 2008  
 DIMENSIONS Image: 10 x 14 7/8 in. (25.4 x 37.8 cm)  
 Sheet: 14 x 16 7/8 in. (35.6 x 42.9 cm)  
 Frame (outer) (ANW EXHIBITION FRAME): 18 5/8 x 24 5/8 x 1 15/16 in. (47.3 x 62.5 x 4.9 cm)  
 CREDIT LINE Museum purchase funded by the Mary Kathryn Lynch Charitable Lead Trust Fund

EX.2015.NW.04.3



ARTIST Kitai Kazuo, Japanese, born 1944  
 TITLE *Students with a Megaphone, Nihon University College of Art  
Barricade*  
 DATE 1968  
 MEDIUM Gelatin silver print  
 DIMENSIONS Image: 16 x 20 in. (40.6 x 50.8 cm)  
 Frame (outer): 20 3/16 x 24 3/16 in. (51.3 x 61.4 cm)  
 CREDIT LINE Tokyo Metropolitan Museum of Photography

EX.2015.NW.04.6



ARTIST Kitai Kazuo, Japanese, born 1944  
 TITLE *Umbrella, Nihon University College of Art  
Barricade*  
 DATE 1968  
 MEDIUM Gelatin silver print  
 DIMENSIONS Image: 14 7/8 x 10 in. (37.8 x 25.4 cm)  
 Frame (outer): 24 3/16 x 20 3/16 in. (61.4 x 51.3 cm)  
 CREDIT LINE Tokyo Metropolitan Museum of Photography

**For a New World to Come: Experiments in Japanese Art  
and Photography, 1968-1979**

EX.2015.NW.132



ARTIST Kitai Kazuo, Japanese, born 1944  
Misuharu Inonue, Japanese

TITLE *Resistance*

DATE 1965

MEDIUM Artist's book

DIMENSIONS Overall: 11 5/8 x 11 5/8 x 1/8 in. (29.5 x 29.5 x 0.3 cm)

CREDIT LINE The Museum of Fine Arts, Houston, The Manfred Heiting Book Collection,  
museum purchase funded by the Caroline Wiess Law Accessions Endowment  
Fund

2014.709



ARTIST Kitajima Keizo, Japanese, born 1954

TITLE *from Photo Express, Tokyo*

DATE 1979

MEDIUM Gelatin silver print, edition 1/3

DIMENSIONS Image: 8 x 11 3/8 in. (20.3 x 28.9 cm)  
Sheet: 12 11/16 x 16 1/8 in. (32.3 x 40.9 cm)  
Frame (outer) (ANW EXHIBITION FRAME): 16 5/8 x 20 5/8 x 1 3/4 in. (42.2 x 52.4 x 4.4 cm)

CREDIT LINE Museum purchase funded by the Caroline Wiess Law Accessions Endowment  
Fund

2014.710



ARTIST Kitajima Keizo, Japanese, born 1954

TITLE *from Photo Express, Tokyo*

DATE 1979

MEDIUM Gelatin silver print, edition 1/3

DIMENSIONS Image: 8 x 11 3/8 in. (20.3 x 28.9 cm)  
Sheet: 12 11/16 x 16 1/16 in. (32.3 x 40.8 cm)  
Frame (outer) (ANW EXHIBITION FRAME): 16 5/8 x 20 5/8 x 1 3/4 in. (42.2 x 52.4 x 4.4 cm)

CREDIT LINE Museum purchase funded by the Caroline Wiess Law Accessions Endowment  
Fund

2014.711



ARTIST Kitajima Keizo, Japanese, born 1954

TITLE *from Photo Express, Tokyo*

DATE 1979

MEDIUM Gelatin silver print, edition 1/3

DIMENSIONS Image: 8 x 11 3/8 in. (20.3 x 28.9 cm)  
Sheet: 12 11/16 x 16 1/16 in. (32.3 x 40.8 cm)  
Frame (outer) (ANW EXHIBITION FRAME): 16 5/8 x 20 5/8 x 1 3/4 in. (42.2 x 52.4 x 4.4 cm)

CREDIT LINE Museum purchase funded by the Caroline Wiess Law Accessions Endowment  
Fund

2014.712



ARTIST Kitajima Keizo, Japanese, born 1954

TITLE *from Photo Express, Tokyo*

DATE 1979

MEDIUM Gelatin silver print, edition 1/3

DIMENSIONS Image: 8 x 11 3/8 in. (20.3 x 28.9 cm)  
Sheet: 12 11/16 x 16 1/8 in. (32.3 x 40.9 cm)  
Frame (outer) (ANW EXHIBITION FRAME): 16 5/8 x 20 5/8 x 1 3/4 in. (42.2 x 52.4 x 4.4 cm)

CREDIT LINE Museum purchase funded by the Caroline Wiess Law Accessions Endowment  
Fund

For a New World to Come: Experiments in Japanese Art  
and Photography, 1968-1979

CM#620.HL.110



ARTIST Kitajima Keizo, Japanese, born 1954  
 TITLE *Photo Express: Tokyo*  
 DATE Selected issues, January–December 1979  
 MEDIUM Artist's book, Reissued Göttingen: Steidl/Le Bal, 2012  
 DIMENSIONS Overall: 10 1/8 x 7 3/16 x 1 1/16 in. (25.7 x 18.3 x 2.7 cm)  
 Storage box: 10 5/8 x 7 5/16 x 1 3/8 in. (27 x 18.6 x 3.5 cm)  
 CREDIT LINE

EX.2015.NW.36.2



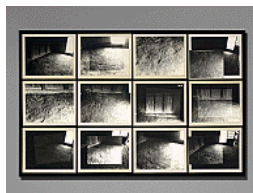
ARTIST Kitajima Keizo, Japanese, born 1954  
 TITLE *Installation Photographs of the Exhibition Photo Express: Tokyo*  
 DATE 1979  
 MEDIUM Inkjet print, printed 2015  
 DIMENSIONS Overall: 60 x 84 1/16 x 1 in. (152.4 x 213.5 x 2.5 cm)  
 CREDIT LINE

EX.2015.NW.150



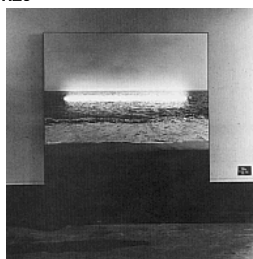
ARTIST Takemae Kiya, Japanese  
 TITLE *Photographs of Okinawa's "One Million People's Distress and Resistance"*  
 DATE 1970  
 MEDIUM Artist's book  
 DIMENSIONS Overall: 10 1/8 x 7 1/4 x 3/8 in. (25.7 x 18.4 x 1 cm)  
 CREDIT LINE The Museum of Fine Arts, Houston, The Manfred Heiting Book Collection, museum purchase funded by the Caroline Wiess Law Accessions Endowment Fund

2014.713.A-L



ARTIST Maita Masafumi, Japanese, 1944 - 2009  
 TITLE *Lumière No. 2*  
 DATE 1977  
 MEDIUM Gelatin silver print collages on artist's mounts  
 DIMENSIONS Overall: 39 3/8 x 53 1/8 in. (100 x 135 cm)  
 Overall (each): 12 7/8 x 15 1/2 x 3/4 in. (32.7 x 39.4 x 1.9 cm)  
 Overall (OVERALL CASE DIMENSIONS): 42 x 66 1/2 x 6 in. (106.7 x 168.9 x 15.2 cm)  
 Other (BLUE BOX DIMS (2 TO EA., 8 TOTAL)): 19 3/8 x 15 3/8 x 2 3/16 in. (49.2 x 39.1 x 5.6 cm)  
 CREDIT LINE Museum purchase funded by Manfred Heiting and The Francis L. Lederer Foundation

EX.2015.NW.23



ARTIST Maita Masafumi, Japanese, 1944 - 2009  
 TITLE *Situation 1*  
 DATE 1973  
 MEDIUM Photo mural with lightbulb  
 DIMENSIONS Overall: 81 3/16 x 77 3/16 in. (206.2 x 196.1 cm)  
 CREDIT LINE Collection of Mitsue Maita

**For a New World to Come: Experiments in Japanese Art  
and Photography, 1968-1979**

EX.2015.NW.05.2



ARTIST Matsumoto Toshio, Japanese, born 1932  
 TITLE *For the Damaged Right Eye*  
 DATE 1968  
 MEDIUM Originally 3 16mm color films; transferred to DVD as a single-channel video  
 DIMENSIONS Film or video: 12 minutes, 9 seconds  
 CREDIT LINE Matsumoto Toshio

2014.714



ARTIST Mochizuki Masao, Japanese, born 1939  
 TITLE *Queen Elizabeth in Tokyo, May 7, 1975*  
 DATE 1975  
 MEDIUM Gelatin silver prints, artist's proof, printed c. 1998  
 DIMENSIONS Overall: 19 5/8 x 27 in. (49.8 x 68.6 cm)  
 Mount: 22 x 32 in. (55.9 x 81.3 cm)  
 Frame (outer) (ANW EXHIBITION FRAME): 30 7/8 x 36 7/8 x 1 3/4 in. (78.4 x 93.7 x 4.4 cm)  
 CREDIT LINE Museum purchase funded by the Caroline Wiess Law Accessions Endowment Fund

EX.2015.NW.41.1



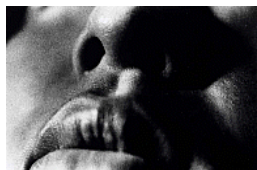
ARTIST Mochizuki Masao, Japanese, born 1939  
 TITLE *Seven Samurai, June 2, 1976*  
*Television 1975-1976*  
 DATE 1975  
 MEDIUM Gelatin silver print, printed c.1998  
 DIMENSIONS Frame (outer): 34 3/16 x 54 3/16 in. (86.9 x 137.7 cm)  
 Mat: 32 x 52 in. (81.3 x 132.1 cm)  
 Image: 21 3/4 x 41 1/2 in. (55.2 x 105.5 cm)  
 CREDIT LINE Risaku Suzuki

EX.2015.NW.41.2



ARTIST Mochizuki Masao, Japanese, born 1939  
 TITLE *Apollo-Soyuz Docking, July 17, 1975*  
*Television 1975-1976*  
 DATE 1975  
 MEDIUM Gelatin silver print, printed c.1998  
 DIMENSIONS Overall: 18 x 18 5/8 in. (45.7 x 47.3 cm)  
 Frame (outer): 28 7/8 x 26 7/8 x 1 3/4 in. (73.3 x 68.3 x 4.4 cm)  
 CREDIT LINE Masao Mochizuki

2001.363



ARTIST Moriyama Daido, Japanese, born 1938  
 TITLE *Tokyo*  
 DATE 1970  
 MEDIUM Gelatin silver print  
 DIMENSIONS Image: 7 1/16 x 10 3/4 in. (17.9 x 27.3 cm)  
 Sheet: 7 1/16 x 10 3/4 in. (17.9 x 27.3 cm)  
 Frame (outer) (ANW EXHIBITION FRAME): 16 5/8 x 20 5/8 x 1 3/4 in. (42.2 x 52.4 x 4.4 cm)  
 CREDIT LINE Museum purchase funded by Morris and Ann Weiner

**For a New World to Come: Experiments in Japanese Art  
and Photography, 1968-1979**

2013.234



ARTIST Moriyama Daido, Japanese, born 1938  
 TITLE *from Tsugaru*  
 DATE 1976  
 MEDIUM Gelatin silver print  
 DIMENSIONS Image: 10 7/8 x 16 1/4 in. (27.6 x 41.3 cm)  
 Sheet: 17 5/8 x 21 5/8 in. (44.8 x 54.9 cm)  
 Frame (outer) (ANW EXHIBITION FRAME): 20 7/8 x 24 7/8 x 1 3/4 in. (53 x 63.2 x 4.4 cm)  
 CREDIT LINE Museum purchase funded by the Mary Kathryn Lynch Kurtz Charitable Lead Trust

EX.2015.NW.06.6



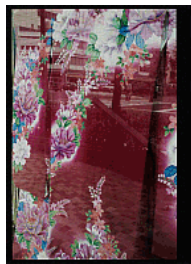
ARTIST Moriyama Daido, Japanese, born 1938  
 TITLE *from Provoke, vol. 3*  
 DATE 1968-1969  
 MEDIUM Magazine  
 DIMENSIONS Overall: 9 7/16 x 14 x 5/16 in. (24 x 35.6 x 0.8 cm)  
 CREDIT LINE Kaneko Ryuichi

EX.2015.NW.43.1



ARTIST Moriyama Daido, Japanese, born 1938  
 TITLE *Kisarazu, Chiba*  
 DATE 1970  
 MEDIUM Chromogenic print  
 DIMENSIONS Image: 10 13/16 x 16 1/8 in. (27.5 x 41 cm)  
 Sheet: 14 x 16 15/16 in. (35.5 x 43 cm)  
 Frame (outer): 15 5/8 x 24 5/8 x 1 3/4 in. (39.7 x 62.5 x 4.4 cm)  
 CREDIT LINE Taka Ishii Gallery

EX.2015.NW.43.2



ARTIST Moriyama Daido, Japanese, born 1938  
 TITLE *Fading City*  
 DATE 1983  
 MEDIUM Chromogenic print, printed in 1995  
 DIMENSIONS Image: 16 3/16 x 11 in. (41.1 x 27.9 cm)  
 Sheet: 16 15/16 x 12 5/8 in. (43 x 32 cm)  
 Frame (outer): 24 5/8 x 18 5/8 x 1 3/4 in. (62.5 x 47.3 x 4.4 cm)  
 CREDIT LINE Taka Ishii Gallery

EX.2015.NW.43.3



ARTIST Moriyama Daido, Japanese, born 1938  
 TITLE *Yokosuka*  
 DATE 1970  
 MEDIUM Chromogenic print, printed in 1995  
 DIMENSIONS Image: 10 15/16 x 16 1/4 in. (27.8 x 41.2 cm)  
 Sheet: 14 x 16 15/16 in. (35.5 x 43 cm)  
 Frame (outer): 18 5/8 x 24 5/8 x 1 3/4 in. (47.3 x 62.5 x 4.4 cm)  
 CREDIT LINE Taka Ishii Gallery

**For a New World to Come: Experiments in Japanese Art  
and Photography, 1968-1979**

EX.2015.NW.43.4



ARTIST Moriyama Daido, Japanese, born 1938  
 TITLE *Yokosuka*  
 DATE 1970  
 MEDIUM Chromogenic print, printed in 1995  
 DIMENSIONS Image: 10 15/16 x 16 1/4 in. (27.8 x 41.2 cm)  
 Sheet: 14 x 16 15/16 in. (35.5 x 43 cm)  
 Frame (outer): 22 7/8 x 31 3/8 x 1 3/4 in. (58.1 x 79.7 x 4.4 cm)  
 CREDIT LINE Taka Ishii Gallery

EX.2015.NW.43.5



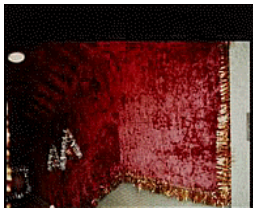
ARTIST Moriyama Daido, Japanese, born 1938  
 TITLE *Tokyo*  
 DATE 1970-1979  
 MEDIUM Chromogenic print, printed in 1995  
 DIMENSIONS Image: 10 15/16 x 16 1/4 in. (27.8 x 41.2 cm)  
 Sheet: 14 x 16 15/16 in. (35.5 x 43 cm)  
 Frame (outer): 18 5/8 x 24 5/8 x 1 3/4 in. (47.3 x 62.5 x 4.4 cm)  
 CREDIT LINE Taka Ishii Gallery

EX.2015.NW.43.6



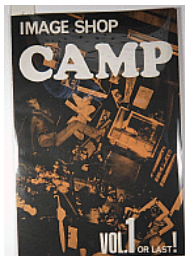
ARTIST Moriyama Daido, Japanese, born 1938  
 TITLE *Hiroshima*  
 DATE 1972  
 MEDIUM Chromogenic print, printed in 1995  
 DIMENSIONS Image: 10 15/16 x 16 1/4 in. (27.8 x 41.2 cm)  
 Sheet: 14 x 16 15/16 in. (35.5 x 43 cm)  
 Frame (outer): 18 5/8 x 24 5/8 x 1 3/4 in. (47.3 x 62.5 x 4.4 cm)  
 CREDIT LINE Taka Ishii Gallery

EX.2015.NW.43.7



ARTIST Moriyama Daido, Japanese, born 1938  
 TITLE *Fading City*  
 DATE 1970  
 MEDIUM Chromogenic print, printed in 1995  
 DIMENSIONS Image: 10 15/16 x 16 1/4 in. (27.8 x 41.2 cm)  
 Sheet: 14 x 16 15/16 in. (35.5 x 43 cm)  
 Frame (outer): 18 5/8 x 24 5/8 x 1 3/4 in. (47.3 x 62.5 x 4.4 cm)  
 CREDIT LINE Taka Ishii Gallery

EX.2015.NW.133



ARTIST Moriyama Daido, Japanese, born 1938  
 Takashi Yada, Japanese  
 TITLE *Image Shop Camp, Vol. 1 or Last!*  
 DATE 1980  
 MEDIUM Artist's book  
 DIMENSIONS Overall: 16 1/4 x 11 3/8 x 1/8 in. (41.3 x 28.9 x 0.3 cm)  
 CREDIT LINE The Museum of Fine Arts, Houston, The Manfred Heiting Book Collection,  
 museum purchase funded by the Caroline Wiess Law Accessions Endowment  
 Fund

For a New World to Come: Experiments in Japanese Art  
and Photography, 1968-1979

EX.2015.NW.06.11



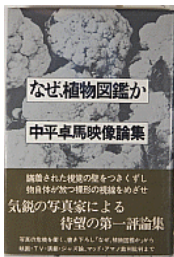
ARTIST Nakahira Takuma, Japanese, born 1938  
TITLE *from Provoke, vol. 1*  
DATE 1968  
MEDIUM Unbound printed Magazine pages  
DIMENSIONS Image: 8 5/16 x 16 in. (21.1 x 40.6 cm)  
CREDIT LINE Kaneko Ryuichi

EX.2015.NW.33.1



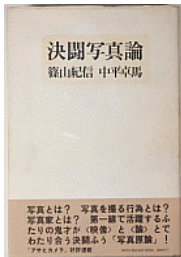
ARTIST Nakahira Takuma, Japanese, born 1938  
TITLE *Circulation: Date, Place, Events*  
DATE 1971  
MEDIUM 54 Gelatin silver prints  
DIMENSIONS Image: 16 1/8 x 23 3/4 in. (40.9 x 60.4 cm)  
Sheet: 15 1/4 x 22 13/16 in. (38.7 x 58 cm)  
Overall: 96 x 180 in. (243.8 x 457.2 cm)  
CREDIT LINE Collection of the artist, Courtesy of Orisis, Co., Ltd c/o

EX.2015.NW.183



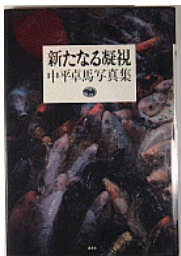
ARTIST Nakahira Takuma, Japanese, born 1938  
TITLE *Why an Illustrated Botanical Dictionary?*  
DATE 1973  
MEDIUM Artist's book  
DIMENSIONS Overall: 7 5/8 x 5 3/8 x 1/8 in. (19.4 x 13.7 x 0.3 cm)  
CREDIT LINE The Museum of Fine Arts, Houston, The Manfred Heiting Book Collection, museum purchase funded by the Caroline Wiess Law Accessions Endowment Fund

EX.2015.NW.184



ARTIST Nakahira Takuma, Japanese, born 1938  
Kishin Shinoyama, Japanese, born 1940  
TITLE *Discussing Photography: A Duel*  
DATE 1977  
MEDIUM Artist's book  
DIMENSIONS Overall: 8 5/8 x 6 1/4 x 1 1/8 in. (21.9 x 15.9 x 2.9 cm)  
CREDIT LINE The Museum of Fine Arts, Houston, The Manfred Heiting Book Collection, museum purchase funded by the Caroline Wiess Law Accessions Endowment Fund

EX.2015.NW.185



ARTIST Nakahira Takuma, Japanese, born 1938  
TITLE *A New Gaze*  
DATE 1983  
MEDIUM Artist's book  
DIMENSIONS Overall: 10 3/8 x 7 1/2 x 5/8 in. (26.4 x 19.1 x 1.6 cm)  
CREDIT LINE The Museum of Fine Arts, Houston, The Manfred Heiting Book Collection, museum purchase funded by the Caroline Wiess Law Accessions Endowment Fund

**For a New World to Come: Experiments in Japanese Art  
and Photography, 1968-1979**

EX.2015.NW.196.1



ARTIST Nakahira Takuma, Japanese, born 1938  
 TITLE *Untitled*  
*For a Language to Come*  
 DATE 1968-1969  
 MEDIUM Gelatin silver print  
 DIMENSIONS Image: 12 3/4 x 19 1/4 in. (32.4 x 48.9 cm)  
 CREDIT LINE Tokyo Metropolitan Museum of Photography

EX.2015.NW.196.2



ARTIST Nakahira Takuma, Japanese, born 1938  
 TITLE *Untitled*  
*For a Language to Come*  
 DATE 1968-1969  
 MEDIUM Gelatin silver print  
 DIMENSIONS Image: 12 3/4 x 19 1/4 in. (32.4 x 48.9 cm)  
 CREDIT LINE Tokyo Metropolitan Museum of Photography

EX.2015.NW.196.3



ARTIST Nakahira Takuma, Japanese, born 1938  
 TITLE *Untitled*  
*For a Language to Come*  
 DATE 1968-1969  
 MEDIUM Gelatin silver print  
 DIMENSIONS Image: 19 1/4 x 12 3/4 in. (48.9 x 32.4 cm)  
 CREDIT LINE Tokyo Metropolitan Museum of Photography

EX.2015.NW.196.4



ARTIST Nakahira Takuma, Japanese, born 1938  
 TITLE *Untitled*  
*For a Language to Come*  
 DATE 1968-1969  
 MEDIUM Gelatin silver print  
 DIMENSIONS Image: 19 1/4 x 12 3/4 in. (48.9 x 32.4 cm)  
 CREDIT LINE Tokyo Metropolitan Museum of Photography

EX.2015.NW.196.5



ARTIST Nakahira Takuma, Japanese, born 1938  
 TITLE *Untitled*  
*For a Language to Come*  
 DATE 1968-1969  
 MEDIUM Gelatin silver print  
 DIMENSIONS Image: 19 1/4 x 12 3/4 in. (48.9 x 32.4 cm)  
 CREDIT LINE Tokyo Metropolitan Museum of Photography

**For a New World to Come: Experiments in Japanese Art  
and Photography, 1968-1979**

EX.2015.NW.196.6



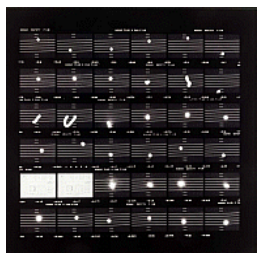
ARTIST Nakahira Takuma, Japanese, born 1938  
 TITLE *Untitled*  
*For a Language to Come*  
 DATE 1968-1969  
 MEDIUM Gelatin silver print  
 DIMENSIONS Image: 12 3/4 x 19 1/4 in. (32.4 x 48.9 cm)  
 CREDIT LINE Tokyo Metropolitan Museum of Photography

EX.2015.NW.151



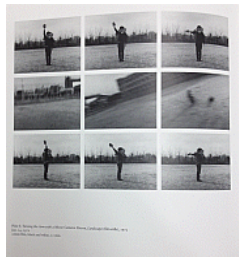
ARTIST Nihon University All-Campus Joint Struggle Committee Photographers Unit  
 Nihon University All-Campus Joint-Struggle Editors  
 TITLE *Nihon University Struggle*  
 DATE 1969  
 MEDIUM Artist's book  
 DIMENSIONS Overall: 11 1/2 x 8 3/4 x 1/2 in. (29.2 x 22.2 x 1.3 cm)  
 CREDIT LINE The Museum of Fine Arts, Houston, The Manfred Heiting Book Collection,  
 museum purchase funded by the Caroline Wiess Law Accessions Endowment  
 Fund

2014.715



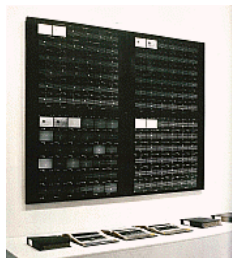
ARTIST Nomura Hitoshi, Japanese, born 1945  
 TITLE *'moon' score, December 19, 1975*  
 DATE 1975  
 MEDIUM Gelatin silver print, edition 1/5, printed c. 1995  
 DIMENSIONS Image: 37 7/8 x 39 3/8 in. (96.2 x 100 cm)  
 Frame (outer): 45 5/16 x 48 7/16 x 1 1/2 in. (115.1 x 123 x 3.8 cm)  
 CREDIT LINE Museum purchase funded by the Caroline Wiess Law Accessions Endowment  
 Fund

EX.2015.NW.15.A,B



ARTIST Nomura Hitoshi, Japanese, born 1945  
 TITLE *Turning the Arm with a Movie Camera: Person, Landscape*  
 DATE 1972  
 MEDIUM Originally 16mm black-and-white film; transferred to DVD  
 DIMENSIONS Film or video: approximately 11 minutes  
 CREDIT LINE Collection of the artist, courtesy of Fergus McCaffrey

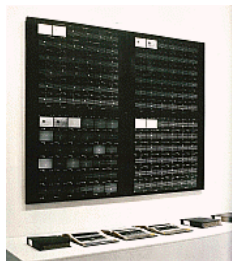
EX.2015.NW.49.1



ARTIST Nomura Hitoshi, Japanese, born 1945  
 TITLE *'moon' score*  
*Jan. 1, 1977- Jun. 27, 1977*  
 DATE 1975-1979  
 MEDIUM Binder with 82 sheets of prints.  
 DIMENSIONS Overall (Binder dimensions): 13 3/4 x 9 13/16 in. (35 x 25 cm)  
 Image (Print dimensions): 8 1/4 x 9 1/4 in. (21 x 23.5 cm)  
 CREDIT LINE The National Museum of Modern Art Tokyo

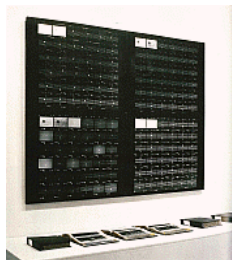
**For a New World to Come: Experiments in Japanese Art  
and Photography, 1968-1979**

EX.2015.NW.49.2



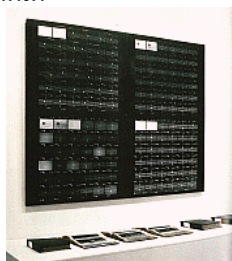
ARTIST Nomura Hitoshi, Japanese, born 1945  
 TITLE *'moon' score*  
 DATE 1975-1979  
 MEDIUM Binder with 69 sheets of prints.  
 DIMENSIONS Overall (Binder dimensions): 13 3/4 x 9 13/16 in. (35 x 25 cm)  
 Image (Print dimensions): 8 1/4 x 9 1/4 in. (21 x 23.5 cm)  
 CREDIT LINE The National Museum of Modern Art Tokyo

EX.2015.NW.49.3



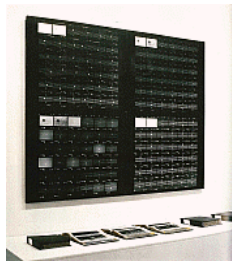
ARTIST Nomura Hitoshi, Japanese, born 1945  
 TITLE *'moon' score*  
*Dec. 19, 1975 - Dec.31, 1976*  
 DATE 1975-1979  
 MEDIUM Binder with 79 sheets of prints.  
 DIMENSIONS Overall (Binder dimensions): 13 3/4 x 9 13/16 in. (35 x 25 cm)  
 Image (Print dimensions): 8 1/4 x 9 1/4 in. (21 x 23.5 cm)  
 CREDIT LINE The National Museum of Modern Art Tokyo

EX.2015.NW.49.4



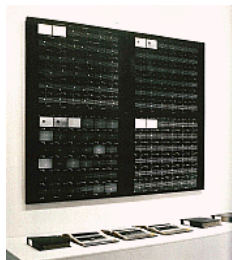
ARTIST Nomura Hitoshi, Japanese, born 1945  
 TITLE *'moon' score*  
*Jul. 1, 1977- Dec. 28, 1977*  
 DATE 1975-1979  
 MEDIUM Binder with 73 sheets of prints.  
 DIMENSIONS Overall (Binder dimensions): 13 3/4 x 9 13/16 in. (35 x 25 cm)  
 Image (Print dimensions): 8 1/4 x 9 1/4 in. (21 x 23.5 cm)  
 CREDIT LINE The National Museum of Modern Art Tokyo

EX.2015.NW.49.5



ARTIST Nomura Hitoshi, Japanese, born 1945  
 TITLE *'moon' score*  
*Jan. 11, 1978- Jun. 21, 1978*  
 DATE 1975-1979  
 MEDIUM Binder with 87 sheets of prints.  
 DIMENSIONS Overall (Binder dimensions): 13 3/4 x 9 13/16 in. (35 x 25 cm)  
 Image (Print dimensions): 8 1/4 x 9 1/4 in. (21 x 23.5 cm)  
 CREDIT LINE The National Museum of Modern Art Tokyo

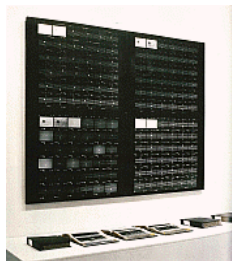
EX.2015.NW.49.6



ARTIST Nomura Hitoshi, Japanese, born 1945  
 TITLE *'moon' score*  
*Jan. 1, 1979- Jun. 14, 1979*  
 DATE 1975-1979  
 MEDIUM Binder with 89 sheets of prints.  
 DIMENSIONS Overall (Binder dimensions): 13 3/4 x 9 13/16 in. (35 x 25 cm)  
 Image (Print dimensions): 8 1/4 x 9 1/4 in. (21 x 23.5 cm)  
 CREDIT LINE The National Museum of Modern Art Tokyo

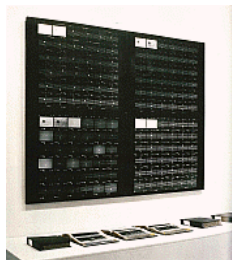
**For a New World to Come: Experiments in Japanese Art  
and Photography, 1968-1979**

EX.2015.NW.49.7.A-C



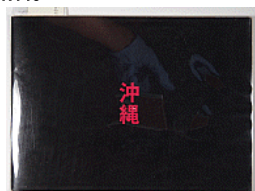
ARTIST Nomura Hitoshi, Japanese, born 1945  
 TITLE *'moon' score*  
 DATE 1975-1979  
 MEDIUM Sound piece- LP RECORD  
 DIMENSIONS  
 CREDIT LINE The National Museum of Modern Art Tokyo

EX.2015.NW.49.8.A-D



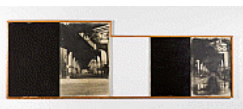
ARTIST Nomura Hitoshi, Japanese, born 1945  
 TITLE *'moon' score*  
 DATE 1975-1979  
 MEDIUM Sound piece- 3 cds  
 DIMENSIONS  
 CREDIT LINE The National Museum of Modern Art Tokyo

EX.2015.NW.146



ARTIST Oe Kenzaburo , Students (anonymous), Japanese  
 TITLE *Okinawa*  
 DATE 1971  
 MEDIUM Artist's book  
 DIMENSIONS Overall: 7 1/4 x 10 1/4 x 1/4 in. (18.4 x 26 x 0.6 cm)  
 CREDIT LINE The Museum of Fine Arts, Houston, The Manfred Heiting Book Collection,  
 museum purchase funded by the Caroline Wiess Law Accessions Endowment  
 Fund

EX.2015.NW.39



ARTIST Sugiura Kunié, Japanese, born 1942  
 TITLE *Deadend Street*  
 DATE 1978  
 MEDIUM Photo emulsion and acrylic on canvas and wood  
 DIMENSIONS Overall: 37 x 114 in. (94 x 289.6 cm)  
 CREDIT LINE Francesco Pellizzi

EX.2015.NW.40

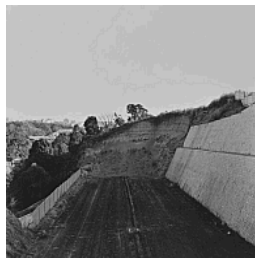


ARTIST Sugiura Kunié, Japanese, born 1942  
 TITLE *Central Park 3*  
 DATE 1971  
 MEDIUM Photo emulsion and acrylic on canvas and wood  
 DIMENSIONS Overall: 60 x 84 in. (152.4 x 213.4 cm)  
 CREDIT LINE Sugiura Kunié

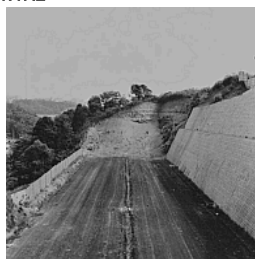
**For a New World to Come: Experiments in Japanese Art  
and Photography, 1968-1979**

**EX.2015.NW.06.8**

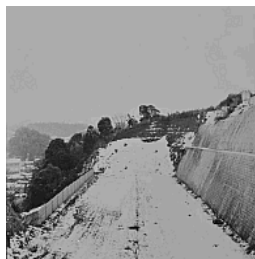
ARTIST Takanashi Yutaka, Japanese, born 1935  
 TITLE *from Provale, Vol. 2*  
 DATE 1968-1969  
 MEDIUM Printed Magazine pages  
 DIMENSIONS Mat: 16 x 20 in. (40.6 x 50.8 cm)  
 Image: 9 5/8 x 14 in. (24.4 x 35.6 cm)  
 CREDIT LINE Kaneko Ryuichi

**EX.2015.NW.47.1**

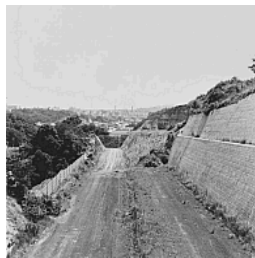
ARTIST Tamura Akihide, Japanese, born 1947  
 TITLE *Road*  
 DATE 1976-1981  
 MEDIUM Gelatin silver print  
 DIMENSIONS Overall: 6 3/4 x 6 3/4 in. (17.1 x 17.1 cm)  
 Overall: 59 1/2 x 48 3/8 in. (151.1 x 122.9 cm)  
 With 3" vertical gap and 5" horizontal gap between frames  
 CREDIT LINE The National Museum of Modern Art, Tokyo

**EX.2015.NW.47.2**

ARTIST Tamura Akihide, Japanese, born 1947  
 TITLE *Road*  
 DATE 1976-1981  
 MEDIUM Gelatin silver print  
 DIMENSIONS Overall: 6 3/4 x 6 3/4 in. (17.1 x 17.1 cm)  
 CREDIT LINE The National Museum of Modern Art, Tokyo

**EX.2015.NW.47.3**

ARTIST Tamura Akihide, Japanese, born 1947  
 TITLE *Road*  
 DATE 1976-1981  
 MEDIUM Gelatin silver print  
 DIMENSIONS Overall: 6 3/4 x 6 3/4 in. (17.1 x 17.1 cm)  
 CREDIT LINE The National Museum of Modern Art, Tokyo

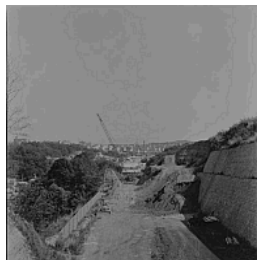
**EX.2015.NW.47.4**

ARTIST Tamura Akihide, Japanese, born 1947  
 TITLE *Road*  
 DATE 1976-1981  
 MEDIUM Gelatin silver print  
 DIMENSIONS Overall: 6 3/4 x 6 3/4 in. (17.1 x 17.1 cm)  
 CREDIT LINE The National Museum of Modern Art, Tokyo

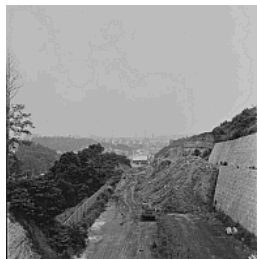
**For a New World to Come: Experiments in Japanese Art  
and Photography, 1968-1979**

**EX.2015.NW.47.5**

ARTIST Tamura Akihide, Japanese, born 1947  
 TITLE *Road*  
 DATE 1976-1981  
 MEDIUM Gelatin silver print  
 DIMENSIONS Overall: 6 3/4 x 6 3/4 in. (17.1 x 17.1 cm)  
 CREDIT LINE The National Museum of Modern Art, Tokyo

**EX.2015.NW.47.6**

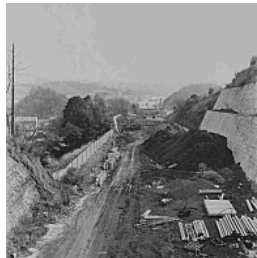
ARTIST Tamura Akihide, Japanese, born 1947  
 TITLE *Road*  
 DATE 1976-1981  
 MEDIUM Gelatin silver print  
 DIMENSIONS Overall: 6 3/4 x 6 3/4 in. (17.1 x 17.1 cm)  
 CREDIT LINE The National Museum of Modern Art, Tokyo

**EX.2015.NW.47.7**

ARTIST Tamura Akihide, Japanese, born 1947  
 TITLE *Road*  
 DATE 1976-1981  
 MEDIUM Gelatin silver print  
 DIMENSIONS Overall: 6 3/4 x 6 3/4 in. (17.1 x 17.1 cm)  
 CREDIT LINE The National Museum of Modern Art, Tokyo

**EX.2015.NW.47.8**

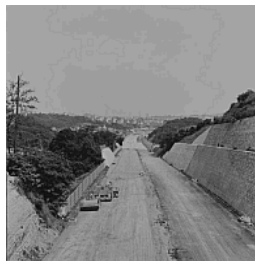
ARTIST Tamura Akihide, Japanese, born 1947  
 TITLE *Road*  
 DATE 1976-1981  
 MEDIUM Gelatin silver print  
 DIMENSIONS Overall: 6 3/4 x 6 3/4 in. (17.1 x 17.1 cm)  
 CREDIT LINE The National Museum of Modern Art, Tokyo

**EX.2015.NW.47.9**

ARTIST Tamura Akihide, Japanese, born 1947  
 TITLE *Road*  
 DATE 1976-1981  
 MEDIUM Gelatin silver print  
 DIMENSIONS Overall: 6 3/4 x 6 3/4 in. (17.1 x 17.1 cm)  
 CREDIT LINE The National Museum of Modern Art, Tokyo

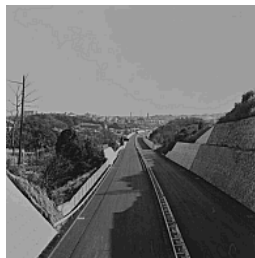
**For a New World to Come: Experiments in Japanese Art  
and Photography, 1968-1979**

EX.2015.NW.47.10



ARTIST Tamura Akihide, Japanese, born 1947  
 TITLE *Road*  
 DATE 1976-1981  
 MEDIUM Gelatin silver print  
 DIMENSIONS Overall: 6 3/4 x 6 3/4 in. (17.1 x 17.1 cm)  
 CREDIT LINE The National Museum of Modern Art, Tokyo

EX.2015.NW.47.11



ARTIST Tamura Akihide, Japanese, born 1947  
 TITLE *Road*  
 DATE 1976-1981  
 MEDIUM Gelatin silver print  
 DIMENSIONS Overall: 6 3/4 x 6 3/4 in. (17.1 x 17.1 cm)  
 CREDIT LINE The National Museum of Modern Art, Tokyo

EX.2015.NW.47.12



ARTIST Tamura Akihide, Japanese, born 1947  
 TITLE *Road*  
 DATE 1976-1981  
 MEDIUM Gelatin silver print  
 DIMENSIONS Overall: 6 3/4 x 6 3/4 in. (17.1 x 17.1 cm)  
 CREDIT LINE The National Museum of Modern Art, Tokyo

EX.2015.NW.197.A.,B



ARTIST Uematsu Keiji, Japanese, born 1947  
 TITLE *Tree/Man/Rope I*  
 DATE 1973  
 MEDIUM 2 gelatin silver prints  
 DIMENSIONS Overall (EX.2015.NW.197.A): 28 3/4 x 20 1/4 in. (73 x 51.4 cm)  
 Overall (EX.2015.NW.197.B): 28 3/4 x 20 1/4 in. (73 x 51.4 cm)  
 CREDIT LINE Uematsu Keiji

EX.2015.NW.198



ARTIST Uematsu Keiji, Japanese, born 1947  
 TITLE *Compression-Relation of Matters*  
 DATE 1971  
 MEDIUM 8mm film, black-and-white; transferred to DVD  
 DIMENSIONS Film or video: 14 minutes, 39 seconds  
 CREDIT LINE Collection of Uematsu, courtesy of Yumiko Chiba Associates, Tokyo

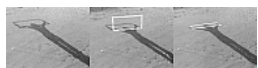
**For a New World to Come: Experiments in Japanese Art  
and Photography, 1968-1979**

TR:104-2014.A.,B



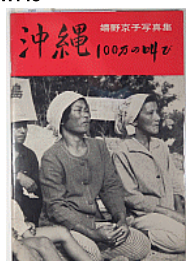
ARTIST Uematsu Keiji, Japanese, born 1947  
 TITLE *Wave Motion 1*  
 DATE 1976  
 MEDIUM Gelatin silver prints, edition 2/4  
 DIMENSIONS Overall: 16 3/8 x 20 1/2 x 1 1/8 in. (41.6 x 52.1 x 2.9 cm)  
 Image (.A): 15 3/4 x 19 7/8 in. (40 x 50.5 cm)  
 Sheet (.A): 15 3/4 x 19 7/8 in. (40 x 50.5 cm)  
 Overall (.B): 16 3/8 x 20 1/2 x 1 1/8 in. (41.6 x 52.1 x 2.9 cm)  
 Image (.B): 15 3/4 x 19 7/8 in. (40 x 50.5 cm)  
 Sheet (.B): 15 3/4 x 19 7/8 in. (40 x 50.5 cm)  
 Frame (outer) (EACH FRAME DIM): 16 3/8 x 20 1/2 x 1 1/4 in. (41.6 x 52.1 x 3.2 cm)  
 CREDIT LINE Promised gift of Michael A. Chesser

TR:105-2014.A.-C



ARTIST Uematsu Keiji, Japanese, born 1947  
 TITLE *Standing Frame*  
 DATE 1976  
 MEDIUM Gelatin silver prints, edition 3/4  
 DIMENSIONS Overall (.A): 16 3/8 x 20 1/2 x 1 1/8 in. (41.6 x 52.1 x 2.9 cm)  
 Image (.A): 15 3/4 x 19 3/4 in. (40 x 50.2 cm)  
 Sheet (.A): 15 3/4 x 19 3/4 in. (40 x 50.2 cm)  
 Overall (.B): 16 3/8 x 20 1/2 x 1 1/8 in. (41.6 x 52.1 x 2.9 cm)  
 Image (.B): 15 3/4 x 19 3/4 in. (40 x 50.2 cm)  
 Sheet (.B): 15 3/4 x 19 3/4 in. (40 x 50.2 cm)  
 Overall (.C): 16 3/8 x 20 1/2 x 1 1/8 in. (41.6 x 52.1 x 2.9 cm)  
 Image (.C): 15 3/4 x 19 3/4 in. (40 x 50.2 cm)  
 Sheet (.C): 15 3/4 x 19 3/4 in. (40 x 50.2 cm)  
 Frame (outer) (EACH FRAME DIM): 16 3/8 x 20 1/2 x 1 1/4 in. (41.6 x 52.1 x 3.2 cm)  
 CREDIT LINE Promised gift of Michael A. Chesser

EX.2015.NW.148



ARTIST Kyoko Ureshino  
 TITLE *Okinawa - A Million of Cries*  
 DATE 1968  
 MEDIUM Artist's book  
 DIMENSIONS Overall: 10 1/8 x 7 1/4 x 1/4 in. (25.7 x 18.4 x 0.6 cm)  
 CREDIT LINE The Museum of Fine Arts, Houston, The Manfred Heiting Book Collection, museum purchase funded by the Caroline Wiess Law Accessions Endowment Fund

EX.2015.NW.20



ARTIST Wakae Kanji, Japanese, born 1944  
 TITLE *Measurement*  
 DATE 1971  
 MEDIUM Gelatin silver print with applied color  
 DIMENSIONS Overall: 27 3/16 x 42 in. (69.1 x 106.7 cm)  
 CREDIT LINE Museum Haus Kasuya c/o Yumiko Chiba Associates, Tokyo

**For a New World to Come: Experiments in Japanese Art  
and Photography, 1968-1979**

EX.2015.NW.21



ARTIST Wakae Kanji, Japanese, born 1944  
 TITLE *Seeing and Looking: Nails*  
 DATE 1974  
 MEDIUM 12 gelatin silver ptins on panel, printed later  
 DIMENSIONS Overall: 72 x 80 in. (182.9 x 203.2 cm)  
 CREDIT LINE Museum Haus Kasuya c/o Yumiko Chiba Associates, Tokyo

EX.2015.NW.143



ARTIST Workshop Shashin Gakko  
 TITLE *Workshop, no. 5*  
 DATE 1975  
 MEDIUM Artist's book  
 DIMENSIONS Overall: 11 x 5 7/8 x 1/4 in. (27.9 x 14.9 x 0.6 cm)  
 CREDIT LINE The Museum of Fine Arts, Houston, The Manfred Heiting Book Collection, museum purchase funded by the Caroline Wiess Law Accessions Endowment Fund

EX.2015.NW.144



ARTIST Workshop Shashin Gakko  
 TITLE *Workshop, no. 8*  
 DATE 1976  
 MEDIUM Artist's book  
 DIMENSIONS Overall: 11 x 5 7/8 x 1/4 in. (27.9 x 14.9 x 0.6 cm)  
 CREDIT LINE The Museum of Fine Arts, Houston, The Manfred Heiting Book Collection, museum purchase funded by the Caroline Wiess Law Accessions Endowment Fund

EX.2015.NW.180



ARTIST Workshop Shashin Gakko  
 TITLE *Workshop, no. 6*  
 DATE 1976  
 MEDIUM Artist's book  
 DIMENSIONS Overall: 11 x 5 7/8 x 1/4 in. (27.9 x 14.9 x 0.6 cm)  
 CREDIT LINE The Museum of Fine Arts, Houston, The Manfred Heiting Book Collection, museum purchase funded by the Caroline Wiess Law Accessions Endowment Fund

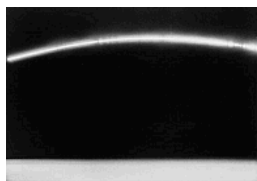
EX.2015.NW.181



ARTIST Workshop Shashin Gakko  
 TITLE *Workshop, no. 7*  
 DATE 1976  
 MEDIUM Artist's book  
 DIMENSIONS Overall: 11 x 5 7/8 x 1/4 in. (27.9 x 14.9 x 0.6 cm)  
 CREDIT LINE The Museum of Fine Arts, Houston, The Manfred Heiting Book Collection, museum purchase funded by the Caroline Wiess Law Accessions Endowment Fund

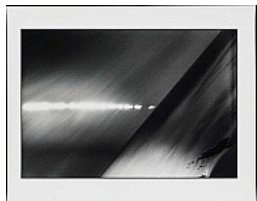
**For a New World to Come: Experiments in Japanese Art  
and Photography, 1968-1979**

2014.722



ARTIST Yamazaki Hiroshi, Japanese, born 1946  
 TITLE *Heliography*  
 DATE 1978  
 MEDIUM Gelatin silver print  
 DIMENSIONS Image: 8 1/4 x 12 1/8 in. (20.9 x 30.8 cm)  
 Sheet: 11 x 13 15/16 in. (27.9 x 35.4 cm)  
 Frame (outer) (ANW EXHIBITION FRAME): 16 5/8 x 20 5/8 x 1 3/4 in. (42.2 x 52.4 x 4.4 cm)  
 CREDIT LINE Museum purchase funded by Morris Weiner

2014.723



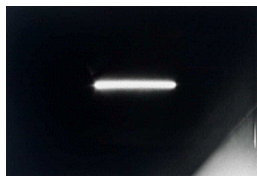
ARTIST Yamazaki Hiroshi, Japanese, born 1946  
 TITLE *Heliography*  
 DATE 1978  
 MEDIUM Gelatin silver print  
 DIMENSIONS Image: 8 1/4 x 12 3/16 in. (20.9 x 30.9 cm)  
 Sheet: 10 15/16 x 13 15/16 in. (27.8 x 35.4 cm)  
 Frame (outer) (ANW EXHIBITION FRAME): 16 5/8 x 20 5/8 x 1 3/4 in. (42.2 x 52.4 x 4.4 cm)  
 CREDIT LINE Museum purchase funded by Joan Morgenstern in honor of Yasufumi Nakamori

2014.724



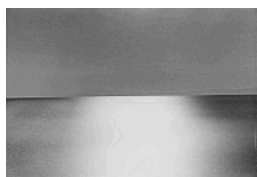
ARTIST Yamazaki Hiroshi, Japanese, born 1946  
 TITLE *Heliography*  
 DATE 1978  
 MEDIUM Gelatin silver print  
 DIMENSIONS Image: 8 1/4 x 12 1/4 in. (20.9 x 31.1 cm)  
 Sheet: 10 15/16 x 14 in. (27.8 x 35.5 cm)  
 Frame (outer) (ANW EXHIBITION FRAME): 16 5/8 x 20 5/8 x 1 3/4 in. (42.2 x 52.4 x 4.4 cm)  
 CREDIT LINE Museum purchase funded by W. Burt Nelson

2014.725



ARTIST Yamazaki Hiroshi, Japanese, born 1946  
 TITLE *Heliography*  
 DATE 1978  
 MEDIUM Gelatin silver print  
 DIMENSIONS Image: 8 1/4 x 12 1/4 in. (20.9 x 31.1 cm)  
 Sheet: 10 15/16 x 14 in. (27.8 x 35.5 cm)  
 Frame (outer) (ANW EXHIBITION FRAME): 16 5/8 x 20 5/8 x 1 3/4 in. (42.2 x 52.4 x 4.4 cm)  
 CREDIT LINE Museum purchase funded by the Mary Kathryn Lynch Kurtz Charitable Lead Trust Fund

2014.726



ARTIST Yamazaki Hiroshi, Japanese, born 1946  
 TITLE *Heliography*  
 DATE 1978  
 MEDIUM Gelatin silver print  
 DIMENSIONS Image: 8 1/4 x 12 1/8 in. (21 x 30.8 cm)  
 Sheet: 10 15/16 x 13 15/16 in. (27.8 x 35.4 cm)  
 Frame (outer) (ANW EXHIBITION FRAME): 16 5/8 x 20 5/8 x 1 3/4 in. (42.2 x 52.4 x 4.4 cm)  
 CREDIT LINE Museum purchase funded by Celia and Jay Munisteri

**For a New World to Come: Experiments in Japanese Art  
and Photography, 1968-1979**

EX.2015.NW.22.1



ARTIST Yamazaki Hiroshi, Japanese, born 1946  
 TITLE *Heliography, Day and Year*  
 DATE 1982  
 MEDIUM Chromagenic print, printed 2012  
 DIMENSIONS Overall: 7 1/4 x 10 1/2 in. (18.4 x 26.7 cm)  
 Frame (outer): 14 5/8 x 18 5/8 x 1 3/4 in. (37.1 x 47.3 x 4.4 cm)  
 CREDIT LINE Yamazaki Hiroshi

EX.2015.NW.22.2



ARTIST Yamazaki Hiroshi, Japanese, born 1946  
 TITLE *Heliography, Day and Year*  
 DATE 1982  
 MEDIUM Chromagenic print, printed 2012  
 DIMENSIONS Overall: 7 1/4 x 10 1/2 in. (18.4 x 26.7 cm)  
 Frame (outer): 18 5/8 x 14 5/8 x 1 3/4 in. (47.3 x 37.1 x 4.4 cm)  
 CREDIT LINE Yamazaki Hiroshi

EX.2015.NW.95.1,-2,3



ARTIST Yamazaki Hiroshi, Japanese, born 1946  
 TITLE *Heliography (1979) 5 minutes 55 seconds*  
*Vision, Take 1 (c. 1978) 3 minutes 35 seconds*  
*Motion (1980) 9 minutes 41 seconds*  
 DATE  
 MEDIUM Originally three 8mm color films; transferred to DVD  
 DIMENSIONS  
 CREDIT LINE Yamazaki Hiroshi

EX.2015.NW.122.1



ARTIST Yamazaki Hiroshi, Japanese, born 1946  
 TITLE *Xerox Photography*  
 DATE 1978  
 MEDIUM Electrostatic print  
 DIMENSIONS Overall: 8 1/2 x 11 7/8 in. (21.6 x 30.2 cm)  
 CREDIT LINE Yamazaki Hiroshi

EX.2015.NW.122.2



ARTIST Yamazaki Hiroshi, Japanese, born 1946  
 TITLE *Xerox Photography*  
 DATE 1978  
 MEDIUM Electrostatic print  
 DIMENSIONS Overall: 8 1/2 x 11 7/8 in. (21.6 x 30.2 cm)  
 CREDIT LINE Yamazaki Hiroshi

**For a New World to Come: Experiments in Japanese Art  
and Photography, 1968-1979**

**EX.2015.NW.122.3**

ARTIST Yamazaki Hiroshi, Japanese, born 1946  
 TITLE *Xerox Photography*  
 DATE 1978  
 MEDIUM Electrostatic print  
 DIMENSIONS Overall: 8 1/2 x 11 7/8 in. (21.6 x 30.2 cm)  
 CREDIT LINE Yamazaki Hiroshi

**EX.2015.NW.122.4**

ARTIST Yamazaki Hiroshi, Japanese, born 1946  
 TITLE *Xerox Photography*  
 DATE 1978  
 MEDIUM Electrostatic print  
 DIMENSIONS Overall: 8 1/2 x 11 7/8 in. (21.6 x 30.2 cm)  
 CREDIT LINE Yamazaki Hiroshi

**EX.2015.NW.122.5**

ARTIST Yamazaki Hiroshi, Japanese, born 1946  
 TITLE *Xerox Photography*  
 DATE 1978  
 MEDIUM Electrostatic print  
 DIMENSIONS Overall: 8 1/2 x 11 7/8 in. (21.6 x 30.2 cm)  
 CREDIT LINE Yamazaki Hiroshi

**EX.2015.NW.122.6**

ARTIST Yamazaki Hiroshi, Japanese, born 1946  
 TITLE *Xerox Photography*  
 DATE 1978  
 MEDIUM Electrostatic print  
 DIMENSIONS Overall: 8 1/2 x 11 7/8 in. (21.6 x 30.2 cm)  
 CREDIT LINE Yamazaki Hiroshi

**For a New World to Come: Experiments in Japanese Art and Photography, 1968–1979**

**Grey Art Gallery, New York University, New York, NY (September 11–December 5, 2015)**

Works added to the Grey Art Gallery's presentation of the exhibition (not on view at MFAH)

---

GAG. 9



Takashi Hamaguchi

*Record of Sanrizuka for 12 Years: The Shudders of Narita Airport*

1978

Photobook; Tokyo: Nihon Shashin Kikaku  
10 1/4 x 7 1/2 in. (262 x 192 cm)

Collection of Russet Lederman and Jeff Gutterman, New York

Frame: Vitrine

---

GAG. 17



Naoyoshi Hikosaka

*Repetition/Reversal: Phases of New Art*

1974

Book and dust jacket

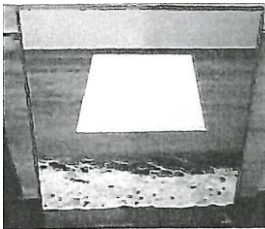
9 1/2 x 7 5/8 x 1 in. (23.3 x 19.5 x 2.5 cm)

Collection of Reiko Tomii

Frame:

---

GAG. 3



Masafumi Maita

*Space*

1971

Silkscreen on gelatin silver print  
28 3/4 x 31 1/8 in. (73 x 79 cm)

Private collection, New York

Frame: 29 1/2 x 32 1/2 in. (75 x 81.5 cm)

---

GAG. 16



Takuma Nakahira

*For a Language to Come*

1970

Photobook; Reprint, Tokyo: Osiris, 2010

12 1/8 x 8 1/2 x 7/8 in. (30.8 x 21.6 x 2.2 cm)

Private collection

Frame: Vitrine

---

GAG. 4



Takuma Nakahira  
*For a Language to Come*  
1970  
Photobook; Tokyo: Fūdōsha  
Each 12 1/8 x 8 1/2 x 7/8 in. (30.8 x 21.6 x 2.2 cm)  
Collection of Russet Lederman and Jeff Gutterman, New York

Frame: Vitrine

---

GAG. 8



Takuma Nakahira and Koji Taki  
*First Abandon the World of Pseudo-Certainty: Thought on Photography and Language*  
1970  
Book; Tokyo: Tabata Shoten  
8 x 5 5/8 x 1 in. (20.5 x 14.5 x 2.5cm)  
Collection of Russet Lederman and Jeff Gutterman, New York

Frame: Vitrine

---

GAG. 5

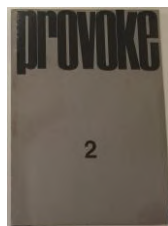


Takuma Nakahira and others  
*Provoke No. 1*  
1968  
Magazine; Tokyo: Purovōku-sha  
8 1/4 x 8 1/4 x 1/4 in. (21.6 x 21.6 x 1.2cm)  
Collection of Russet Lederman and Jeff Gutterman, New York

Frame: Vitrine

---

GAG. 6

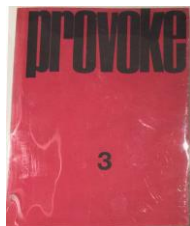


Takuma Nakahira and others  
*Provoke No. 2*  
1969  
Magazine; Tokyo: Purovōku-sha  
9 1/2 x 7 3/8 x 1/4 in. (24.3 x 18.8 x .6 cm)  
Collection of Russet Lederman and Jeff Gutterman, New York

Frame: Vitrine

---

GAG. 7



Takuma Nakahira and others  
*Provoke No. 3*  
1969  
Magazine; Tokyo: Purovōku-sha  
9 1/2 x 7 3/8 x 1/4 in. (24.3 x 18.8 x .6 cm)  
Collection of Russet Lederman and Jeff Gutterman, New York

Frame: Vitrine

---

GAG. 12



Hitoshi Nomura  
*Dryice*  
1969  
Gelatin silver prints  
Private collection, San Francisco

Frame: 10 photographs: 8 photos, 15 3/4 x 10 3/8 in. (40 x 26.5 cm); 2 photos, 15 3/4 x 19 1/8 in. (40 x 48.5 cm)

---

GAG. 10



Hitoshi Nomura  
*Iodine*  
1970  
Gelatin silver prints  
Courtesy Fergus McCaffrey, New York

Frame: 12 photographs, each 13 3/4 x 16 7/8 in. (35 x 43 cm)

---

GAG. 1



Kunié Sugiura  
*Azalea*  
1970  
Photo emulsion and graphite on canvas  
71 x 97 in. (100.3 x 246.4 cm)  
Private collection

Frame:

---

GAG. 15



Kunié Sugiura  
*Firecrackers*  
1981  
C-print and colored paper mounted on paper  
6 3/4 x 5 in. (17.1 x 12.7 cm) [image]; 30 x 22 1/4 in. (76.2 x 56.5 cm) [sheet]  
Courtesy the artist and Leslie Tonkonow Artworks + Projects

Frame:

---

GAG. 13



Artists Unknown  
*Liberation District '68: Record of Strife at Nihon University*  
1968  
Photobook; Tokyo: Liberation District '68 Editorial Committee, Nihon University Zengaku-kyōtō Council  
7 1/4 x 5 in. (18.4 x 12.7 cm)  
Collection of Russet Lederman and Jeff Gutterman, New York

Frame: Vitrine

---

GAG. 14



Artists Unknown

*NON: Record of the Strife at Kwansei Gakuin University*

1969

Photobook; Kwansei Gakuin University Zenkyōtō Press

5 1/4 x 7 3/8 in. (13.3 x 18.7 cm)

Collection of Russet Lederman and Jeff Gutterman, New York

Frame: Vitrine

---

GAG. 2



Kanji Wakae

*Paints-72-1*

1972

Silkscreen on gelatin silver print

17 3/4 x 45 1/4 in. (45 x 115 cm)

Private collection, New York

Frame: