

**Soto: Paris and Beyond, 1950-1970**

Grey Art Gallery, New York University

Illustrated Checklist Thursday, March 08, 2012

Jesús Soto

Plate 01

*Sin título (Paisaje) (Untitled [Landscape])*

1949

Oil on canvas

21 5/8 x 18 7/8 in. (55 x 48 cm)

Colección Patricia Phelps de Cisneros



Jesús Soto

Plate 02

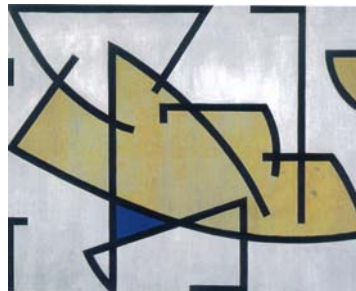
*Composición dinámica (Dynamic Composition)*

1950

Oil on canvas

32 3/4 x 40 1/4 in. (83 x 102 cm)

Collection Christophe Soto



Jesús Soto

Plate 03

*Sin título (Composición dinámica) (Untitled [Dynamic Composition])*

1950 - 1951

Oil on Masonite

75 1/4 x 52 in. (191 x 132 cm)

Private collection



Jesús Soto

A1

*Progresión (Progression)*

1952

Enamel on wood

40 2/5 x 40 2/5 x 2 in. (102.5 x 102.5 x 5 cm)

Colección Fundación Museo de Arte Moderno Jesús Soto, Ciudad Bolívar



Jesús Soto

Plate 05

*Rotation*

1952

Oil on wood

39 3/8 x 39 3/8 x 3 in. (100 x 100 x 7.5 cm)

Centre Pompidou, Paris. Musée national d'art moderne/Centre de création industrielle. Purchase, 1980



Jesús Soto

Plate 06

*Mur blanc (White Wall)*

c. 1952 - 1953

Paper and paint on wood

24 panels, 15 3/4 x 15 3/4 x 2 1/4 in. each

Colección Fundación Museo de Arte Moderno Jesús Soto, Ciudad Bolívar



Jesús Soto

Plate 07

*Pintura serial (Serial Painting)*

c. 1952 - 1953

Paint on wood

39 3/8 x 39 3/8 x 2 3/4 in. (100 x 100 x 7 cm)

Colección Fundación Museo de Arte Moderno Jesús Soto, Ciudad Bolívar



Jesús Soto

Plate 08

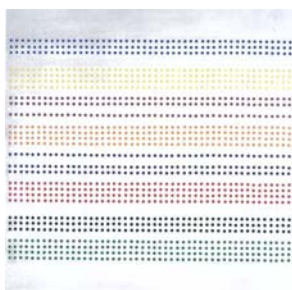
*Sans titre (Étude pour une série) (Untitled [Study for a Series])*

c. 1952 - 1953

Paint and paper on wood

40 1/4 x 40 1/4 x 2 3/8 in. (102 x 102 x 6 cm)

Colección Fundación Museo de Arte Moderno Jesús Soto, Ciudad Bolívar



Jesús Soto

Plate 10

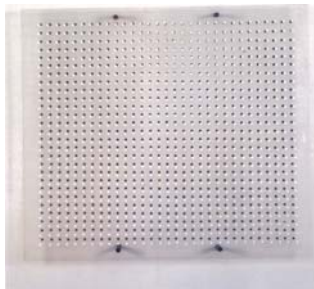
*Points blancs sur points noirs (White Points over Black Points)*

1954

Paint on Plexiglas and wood

39 3/8 x 39 3/8 x 4 1/2 in. (100 x 100 x 11.5 cm)

Private collection



Jesús Soto

Plate 11

*Espiral (Spiral)*

1955

Paint on Plexiglas and wood

19 1/2 x 19 1/2 x 9 3/4 in. (49.5 x 49.5 x 25 cm)

Private collection



Jesús Soto

Plate 12

*Espiral con rojo (Spiral with Red)*

1955

Paint on Plexiglas and wood

19 3/4 x 19 3/4 x 10 1/4 in. (50 x 50 x 26 cm)

Private collection



Jesús Soto

Plate 13

*La cajita de Villanueva (The Little Villanueva Box)*

1955

Paint on Plexiglas

11 3/4 x 11 3/4 x 4 in. (29.8 x 29.8 x 10.2 cm)

Private collection



Jesús Soto

Plate 15

*Sans titre (Structure cinétique à éléments géométriques) (Untitled [Kinetic Structure with Geometric Elements])*

1955

Paint on wood and Plexiglas

19 3/4 x 19 3/4 x 10 1/4 in. (50.2 x 50 x 26.2 cm)

Colección Mercantil



Jesús Soto

Plate 14

*Sans titre (Structure cinétique à éléments géométriques) (Untitled [Kinetic Structure with Geometric Elements])*

1955

Paint on wood and Plexiglas

23 3/4 x 23 5/8 x 9 3/4 in. (60.3 x 60 x 25 cm)

Colección Mercantil



Jesús Soto

Plate 16

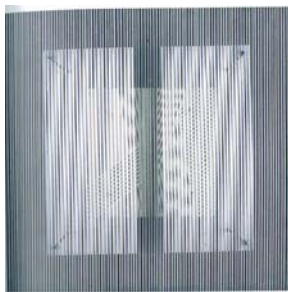
*Luz plateada (Silver Light)*

c. 1955 - 1956

Paint on Plexiglas and wood

39 3/8 x 39 3/8 x 5 7/8 in. (100 x 100 x 15 cm)

Private collection



Jesús Soto

Plate 17

*Sans titre (Structure cinétique à éléments géométriques) (Untitled [Kinetic Structure with Geometric Elements])*

c. 1955 - 1956

Paint on wood and Plexiglas

24 x 24 x 9 3/4 in. (61 x 61 x 25 cm)

Private collection



Jesús Soto

Plate 19

*La cocotte*

1956

Paint on wood

23 5/8 x 33 x 23 5/8 in. (60 x 84 x 60 cm)

Colección Fundación Museo de Arte Moderno Jesús Soto, Ciudad Bolívar



Jesús Soto

Plate 20

*Sin título (Untitled)*

1956

Paint on Plexiglas and wood

19 3/4 x 19 3/4 x 13 3/8 in. (50 x 50 x 34 cm)

Collection Hélène Soto



Jesús Soto

Plate 21

*Maquette du mur de Bruxelles (Maquette for the Brussels Mural)*

1957

Acrylic, wood, and Plexiglas

26 3/4 x 38 5/8 x 6 1/4 in. (68 x 98 x 16 cm)

Colección Maria Graciela and Luis Alfonso Oberto



Jesús Soto

Plate 23

*Première vibration (First Vibration)*

1957

Paint on wire and board

19 3/4 x 19 3/4 x 6 3/4 in. (50 x 50 x 17 cm)

Collection Florence Soto



Jesús Soto

Plate 24

*Vibración (Vibration)*

c. 1958 - 1959

Wood, putty, paint, and wire

39 3/8 x 39 3/8 in. (100 x 100 cm)

Clarissa and Edgar Bronfman Jr. Collection



Jesús Soto

Plate 25

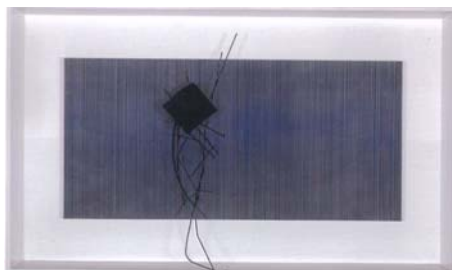
*Bicho (Creature)*

1959

Paint, wire, and metal on wood

22 7/8 x 38 1/4 x 5 1/8 in. (58 x 97 x 13 cm)

Colección Maria Graciela and Luis Alfonso Oberto



Jesús Soto

Plate 26

*Cuadro tres, vibración (Painting Three, Vibration)*

1959

Paint on wire and board

49 1/4 x 35 3/4 x 10 3/8 in. (125 x 91 x 26.5 cm)

Fundación Museos Nacionales, Galería de Arte Nacional - Archivo CINAP, Caracas



Jesús Soto

Plate 27

*Vibration bleu (Blue Vibration)*

1959

Paint on wire and wood

25 1/4 x 59 x 9 1/2 in. (64 x 150 x 24 cm)

Fundación Privada Allegro



Jesús Soto

Plate 29

*Sin título (El gran clavo) (Untitled [The Big Nail])*

c. 1959 - 1960

Paint on metal and mixed media

10 3/8 x 5 1/4 x 9 3/8 in. (26.5 x 13.5 x 24 cm)

Private collection, New York



Jesús Soto

A2

*Untitled*

1959 - 1960

Wood, painted wood, metal, and nails

35 3/8 x 11 3/4 x 13 3/8 in. (89.9 x 29.8 x 34 cm)

The Museum of Modern Art, New York



Jesús Soto

Plate 28

*Alambres circulares (Circular Wires)*

1960

Paint, cloth, putty, and wire on wood

14 5/8 x 12 5/8 x 4 3/4 in. (37 x 32 x 12 cm)

Collection Hélène Soto



Jesús Soto

Plate 30

*La tâche blanche (The White Mark)*

1960

Paint and putty on wire and Masonite

39 3/8 x 63 in. (100 x 160 cm)

Collection Hélène Soto



Jesús Soto

Plate 31

*Leño azul y negro (Blue and Black Log)*

1960

Paint on wood, metal, and Masonite

58 3/4 x 40 1/4 x 5 7/8 in. (149 x 102 x 15 cm)

Collection Hélène Soto



Jesús Soto

Plate 35

*Sin título (Vibración) (Untitled [Vibration])*

1960

Paint on wire, wood, and nylon

27 1/2 x 94 1/2 x 5 in. (69.8 x 240 x 13 cm)

Fundación Privada Allegro



Jesús Soto

Plate 32

*Structure blanche (White Structure)*

1960

Paint, wire, and putty on wood

15 1/4 x 14 5/8 x 4 3/4 in. (38.5 x 37 x 12 cm)

Collection Hélène Soto



Jesús Soto

Plate 34

*Vibración blanca (White Vibration)*

1960

Paint on wire and wood

49 1/4 x 24 3/4 x 11 in. (125 x 63 x 28 cm)

Fundación Privada Allegro



Jesús Soto

Plate 33

*Vibración noire (Black Vibration)*

1960

Paint, cloth, putty, and wire on wood

32 1/4 x 26 x 3 7/8 in. (82 x 66 x 10 cm)

Collection Hélène Soto



Jesús Soto

Plate 37

*L'aiguille (The Needle)*

1961

Paint on wood and mixed media

3 7/8 x 4 3/4 x 2 5/8 in. (10 x 12 x 6.5 cm)

Collection Anne Soto



Jesús Soto

Plate 38

*Leño (Log)*

1961

Wood, acrylic, iron, and wire

29 1/2 x 8 1/4 x 11 in. (75 x 21 x 28 cm)

Colección Patricia Phelps de Cisneros



Jesús Soto

Plate 39

*Materia y grafismo (Matter and Graphism)*

1961

Paint on alabastine, wood, and metal

44 1/8 x 44 1/8 x 1 5/8 in. (112 x 112 x 4 cm)

Collection Hélène Soto



Jesús Soto

Plate 40

*Mural*

1961

Paint, wire, and mixed media on wood

109 1/2 x 194 x 24 3/8 in. (278 x 493 x 62 cm)

Fundación Museos Nacionales, Galería de Arte Nacional - Archivo CINAP, Caracas



Jesús Soto

Plate 41

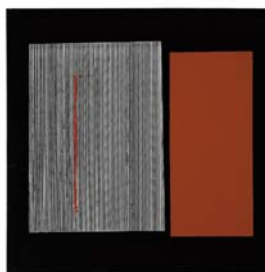
*Sans titre (La ficelle—matière transformée)*  
*(Untitled [The String—Transformed Material])*

1961

Paint, string, and metal on wood

35 3/4 x 35 3/4 x 7 in. (91 x 91 x 18 cm)

Collection Anne Soto





Jesús Soto

Plate 42

*Sin título (Puntos de goma) (Untitled [Grains of Rubber])*

1961

Granulated glue and paint on wire, cloth, and Masonite

28 1/4 x 28 1/4 x 7 7/8 in. (72 x 72 x 20 cm)

Private collection



Jesús Soto

Plate 43

*Sin título (Vibración metálica) (Untitled [Metal Vibration])*

1961

Paint on metal and Masonite

23 5/8 x 23 5/8 x 7 1/8 in. (60 x 60 x 18 cm)

Private collection



Jesús Soto

Plate 44

*Sin título (Vibración toro) (Untitled [Vibration Bull])*

1961

Paint and metal on wood

39 3/8 x 39 3/8 x 11 in. (100 x 100 x 28 cm)

Colección María Graciela and Luis Alfonso Oberto



Jesús Soto

Plate 45

*Les trois cubes bleus (The Three Blue Cubes)*

1962

Paint, metal, wood, and nylon string

39 3/8 x 39 3/8 x 5 7/8 in. (100 x 100 x 15 cm)

María Cristina and Pablo Henning Collection, Houston



Jesús Soto

Plate 48

*Sin título (Escritura) (Untitled [Writing])*

1962

Acrylic paint on wire, wood, and nylon

23 5/8 x 77 5/8 x 5 1/2 in. (60 x 197 x 14 cm)

Fundación Privada Allegro



Jesús Soto

Plate 46

*Vibración en línea libre (Vibration in a Free Line)*

1962

Paint on metal, wire, and wood

35 1/4 x 28 x 4 3/4 in. (89.5 x 71 x 12 cm)

Colección Universidad Simón Bolívar, Donación Blanca Álvarez



Jesús Soto

Plate 49

*El tambor (The Drum)*

1963

Wood, paint, nylon, and metal

28 x 28 x 5 7/8 in. (71 x 71 x 15 cm)

Private collection



Jesús Soto

Plate 50

*Petite écriture noire (Small Black Writing)*

1968

Paint on wood and metal with wire strings

29 1/8 x 55 1/8 x 6 1/4 in. (74 x 140 x 16 cm)

Collection Hélène Soto

